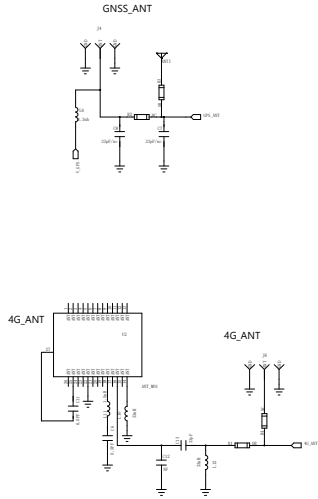


D

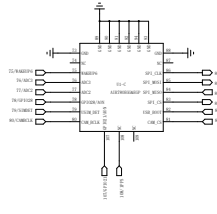
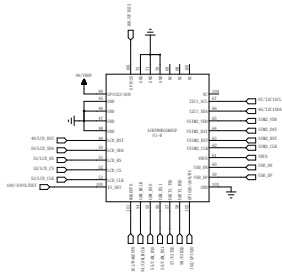
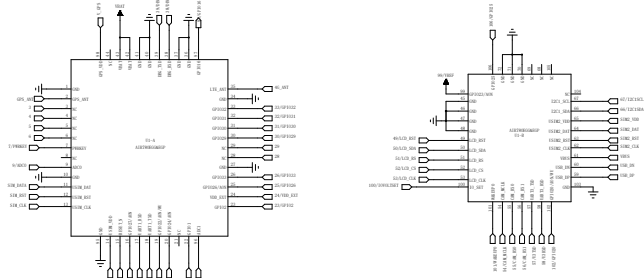
C

简易天线,优先方便,其次性能

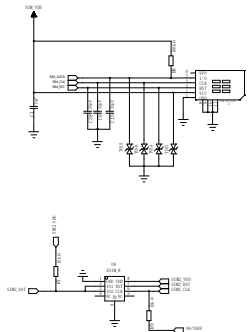
贴片天线性能欠佳时,可使用IPEX外接天线测试评估



Air780EGG&EGP



SIM卡座



REV	REV DATE	REV DATE	REV DATE
1.0	2023-4-24	2023-4-24	2023-4-24
1.1	2023-4-24	2023-4-24	2023-4-24
1.2	2023-4-24	2023-4-24	2023-4-24

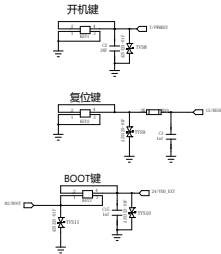
D

C

B

A

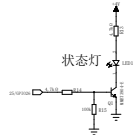
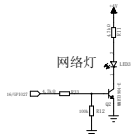
三个按键



排针

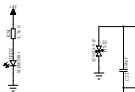


USB通信/供电



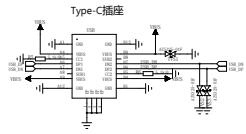
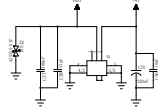
电源状态灯

亮代表BODC工作正常

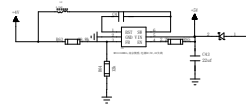


电源切换开关

低功耗测试时用



DC/DC,5V转4V



LuatOS				
Air780EPM/EHM/EHV/EGH核心板				
REV	REV DATE	REV DATE	REV DATE	REV DATE
1.0	2023-4-24	2023-4-24	2023-4-24	2023-4-24
1.1	2023-4-24	2023-4-24	2023-4-24	2023-4-24
1.2	2023-4-24	2023-4-24	2023-4-24	2023-4-24