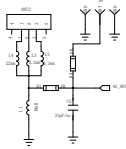


REV	REV NO.	DATE	BY

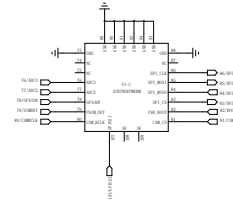
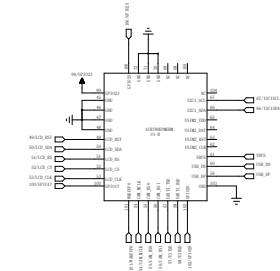
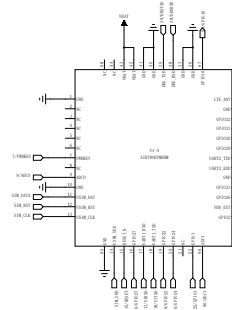
简易天线,优先测试方便,性能指标第二

贴片天线性能欠佳时,可使用IPEX外接天线测试评估

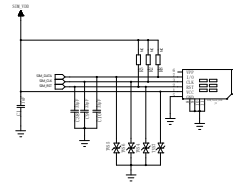
4G_ANT



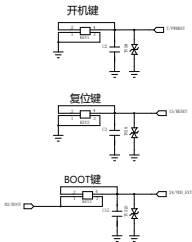
Air780EPM/Air780EHM



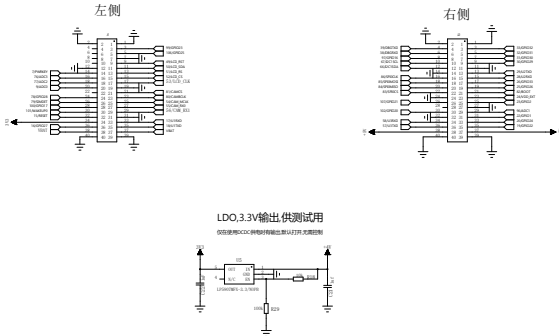
SIM卡座



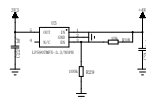
三个按键



排针/电源



LDO.3.3V输出供测试用



电源状态灯

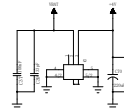
模块供电DC3V工作正常



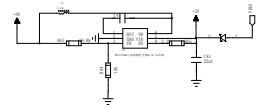
USB通信/电源

电源切换开关

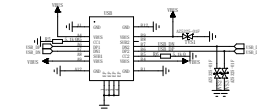
通过本开关可以切换模块的供电电源,并带有短路保护功能



DC/DC.5V转4V



Type-C插座



合宙LuatOS				
Air780EPM_EHM_Core_V20250522				
作者:	ZhuFeng	日期:	2025-5-22	
审核:	LuKangheng	日期:	2025-5-26	
测试:	LuKangheng	日期:	2025-5-26	
发布:	LuKangheng	日期:	2025-5-26	
V1.0		A0		