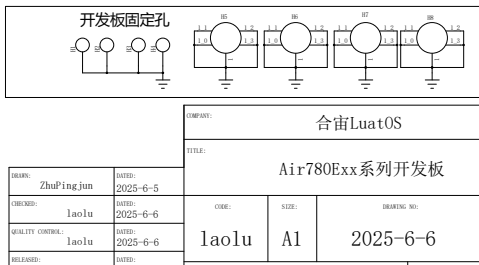
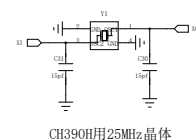


A

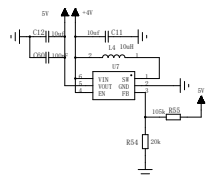
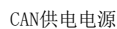
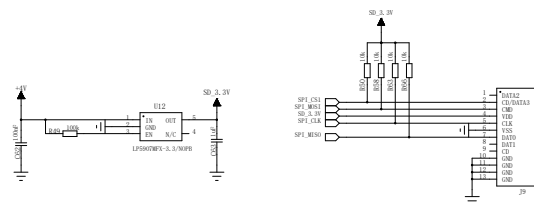
开发板选择使用的LDO相对“随大家根据自己的标准自由选择。如果更看重功耗表现，建议选择静态电流较低的LDO。

--	--	--	--	--

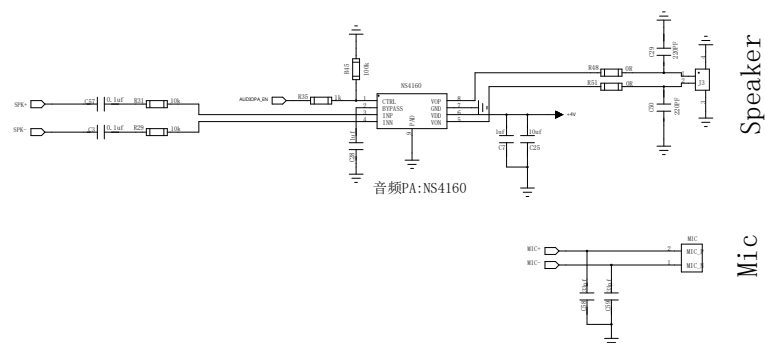
## 以太网RJ45网口



SD



## SD



COMPANY:					合宙LuatOS				
TITLE:					Air780Exx系列开发板				
CODE:			SIZE:		DORING NO:			REV:	
laolu			A1		2025-6-6			4	
SCALE: G						SHEET: 2 of 2			